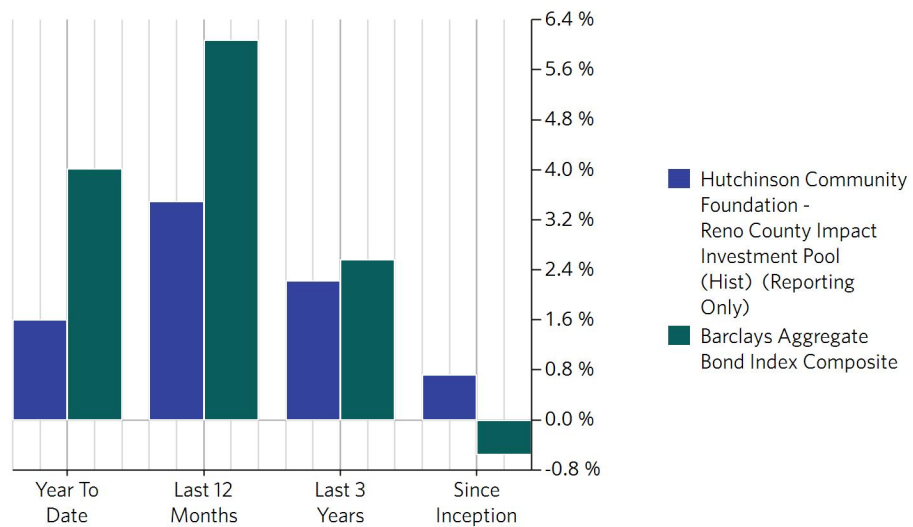


Performance Comparisons

	Return	Benchmark Return ¹
Year To Date	1.60%	4.02%
Last 12 Months	3.49%	6.08%
Last 3 Years	2.22% ²	2.56%
Since Inception	0.72% ²	-0.56%

¹ Barclays Aggregate Bond Index Composite Return, ² Annualized return

Performance Comparison



Calendar Returns

	Return
2006	— ¹
2007	— ¹
2008	— ¹
2009	— ¹
2010	— ¹
2011	— ¹
2012	— ¹
2013	— ¹
2014	— ¹
2015	— ¹
2016	— ¹
2017	— ¹
2018	— ¹
2019	— ¹
2020	— ¹
2021	-0.76%
2022	-3.32%
2023	2.84%
2024	2.75%
Year To Date	1.60%

¹ Not held for the entire period