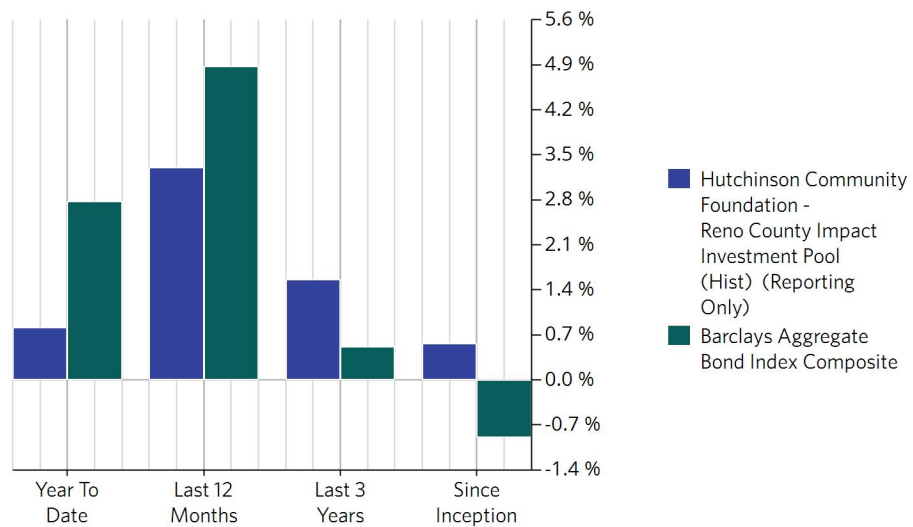


Performance Comparisons

	Return	Benchmark Return ¹
Year To Date	0.82%	2.78%
Last 12 Months	3.31%	4.88%
Last 3 Years	1.56% ²	0.52%
Since Inception	0.56% ²	-0.90%

¹ Barclays Aggregate Bond Index Composite Return, ² Annualized return

Performance Comparison



Calendar Returns

	Return
2006	— ¹
2007	— ¹
2008	— ¹
2009	— ¹
2010	— ¹
2011	— ¹
2012	— ¹
2013	— ¹
2014	— ¹
2015	— ¹
2016	— ¹
2017	— ¹
2018	— ¹
2019	— ¹
2020	— ¹
2021	-0.76%
2022	-3.32%
2023	2.84%
2024	2.75%
Year To Date	0.82%

¹ Not held for the entire period