

### Performance Comparisons

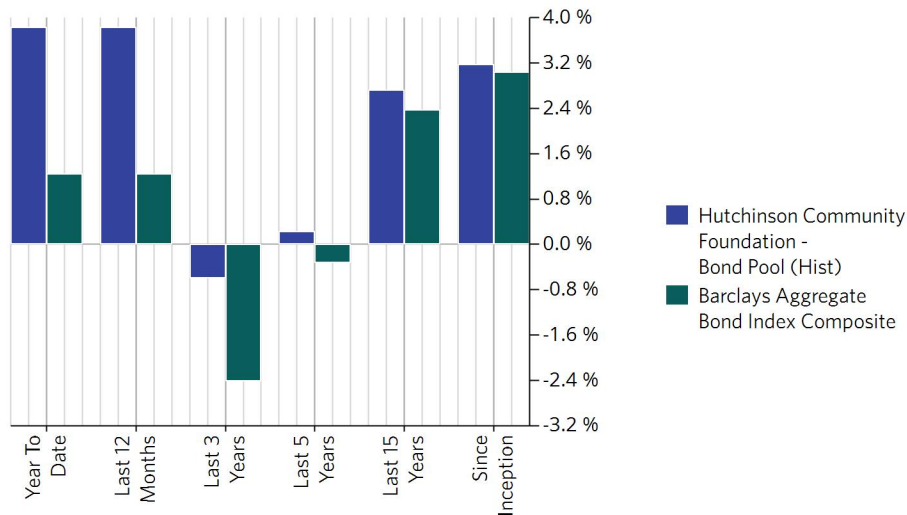
	Return	Benchmark Return <sup>1</sup>
Year To Date	3.83%	1.25%
Last 12 Months	3.83%	1.25%
Last 3 Years	-0.60% <sup>2</sup>	-2.42%
Last 5 Years	0.23% <sup>2</sup>	-0.33%
Last 10 Years	1.86% <sup>2</sup>	1.35%
Last 15 Years	2.72% <sup>2</sup>	2.37%
Since Inception	3.18% <sup>2</sup>	3.04%

<sup>1</sup> Barclays Aggregate Bond Index Composite Return, <sup>2</sup> Annualized return

### Calendar Returns

	Return
2006	2.65%
2007	6.45%
2008	-5.28%
2009	17.04%
2010	8.60%
2011	3.59%
2012	10.15%
2013	-3.92%
2014	4.48%
2015	0.61%
2016	4.68%
2017	6.04%
2018	-1.51%
2019	8.08%
2020	4.50%
2021	-1.47%
2022	-12.03%
2023	7.53%
<b>Year To Date</b>	<b>3.83%</b>

### Performance Comparison



			Year To Date
	Symbol	Allocation	Return
<b>Hutchinson Community Foundation - Bond Pool</b>		<b>100.00%</b>	<b>3.83%</b>
<b>■ Safety</b>		<b>0.06%</b>	<b>9.05%</b>
<b>■ Short Term Reserves</b>		<b>0.06%</b>	<b>9.05%</b>
<b>■ Cash Reserves</b>		<b>0.06%</b>	<b>9.05%</b>
Cash Account	CASH	-2.84%	0.00% <sup>1</sup>
Dreyfus Treasury Cash Mgmt	DTNXX	2.90%	6.02% <sup>1</sup>
<b>■ Income</b>		<b>99.94%</b>	<b>3.98%</b>
<b>■ Taxable Bond Funds</b>		<b>78.34%</b>	<b>4.23%</b>
<b>■ Short Term Maturities Taxable</b>		<b>18.27%</b>	<b>0.00%</b> <sup>1</sup>
Federated Short Term Income Fund Class Y	FSTYX	18.27%	0.00% <sup>1</sup>
<b>■ Intermediate Term Maturities Taxable</b>		<b>60.06%</b>	<b>3.68%</b>
Dodge & Cox Income	DODIX	29.96%	-3.47% <sup>1</sup>
PIMCO Income Fund Institutional Class	PIMIX	30.11%	5.41%
<b>■ Treasury Inflation Protected Securities</b>		<b>9.11%</b>	<b>-3.15%</b> <sup>1</sup>
<b>■ Treasury Inflation Protected Securities</b>		<b>9.11%</b>	<b>-3.15%</b> <sup>1</sup>
PIMCO Real Return Bond Fund Institutional	PRRIX	9.11%	-3.15% <sup>1</sup>
<b>■ International Bonds</b>		<b>12.50%</b>	<b>-2.58%</b> <sup>1</sup>
<b>■ International Bond Funds</b>		<b>12.50%</b>	<b>-2.58%</b> <sup>1</sup>
PIMCO International Bond Fund Institutional Class (US Dollar Hedged)	PFORX	6.26%	1.08% <sup>1</sup>
T. Rowe Price International Bond Fund Cl. I	RPISX	6.23%	-6.21% <sup>1</sup>

<sup>1</sup> Not held for the entire period