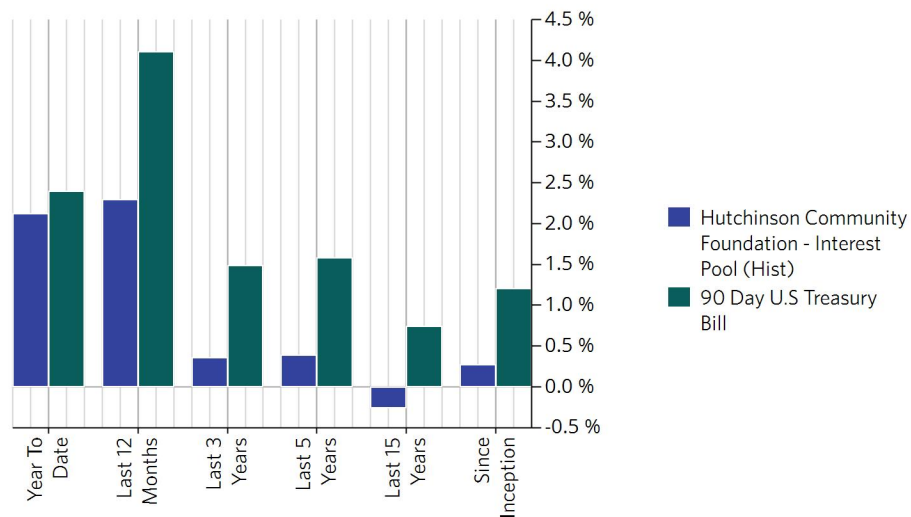


## Performance Comparisons

	Return	Benchmark Return <sup>1</sup>
Year To Date	2.13%	2.40%
Last 12 Months	2.30%	4.11%
Last 3 Years	0.36% <sup>2</sup>	1.49%
Last 5 Years	0.39% <sup>2</sup>	1.58%
Last 10 Years	-0.02% <sup>2</sup>	1.00%
Last 15 Years	-0.26% <sup>2</sup>	0.74%
Since Inception	0.27% <sup>2</sup>	1.21%

<sup>1</sup> 90 Day U.S Treasury Bill Return, <sup>2</sup> Annualized return

## Performance Comparison



## Calendar Returns

	Return
2006	3.78%
2007	3.99%
2008	1.29%
2009	-0.84%
2010	-0.95%
2011	-0.92%
2012	-0.89%
2013	-0.66%
2014	-0.77%
2015	-0.52%
2016	-0.45%
2017	-0.18%
2018	0.35%
2019	0.69%
2020	-0.51%
2021	-0.58%
2022	-0.01%
Year To Date	2.13%